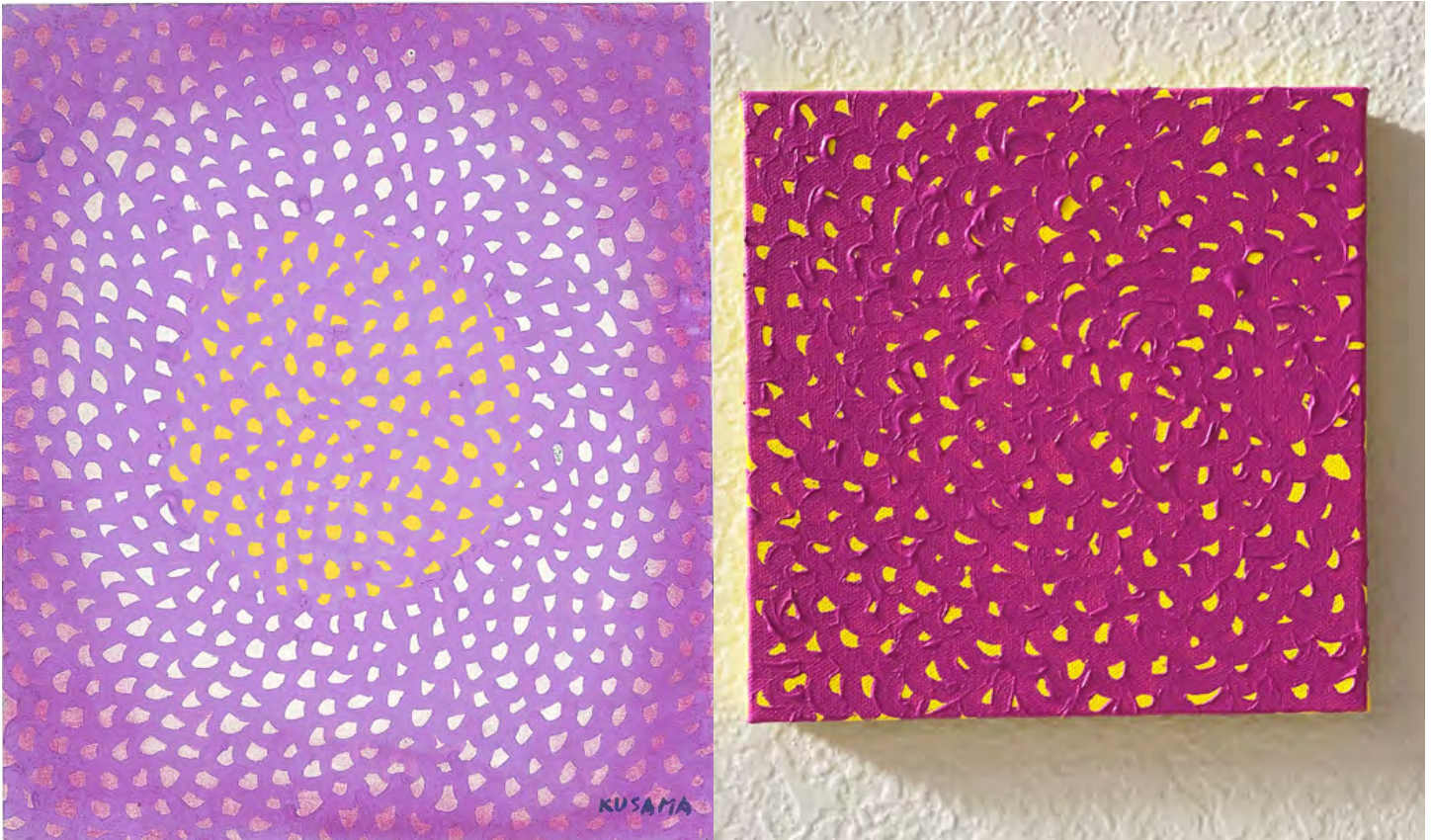


BLANTON

ART WHERE YOU ARE STUDIO



Yayoi Kusama: Infinity Net

Image (left): Yayoi Kusama, *Nets (K.L.M.)*, 1957, pastel and aqueous tempera, 15 1/4 x 12 13/16 in., Blanton Museum of Art, The University of Texas at Austin, Gift of the Center for International Contemporary Arts; Emanuel and Charlotte Levine Collection, 1992, © YAYOI KUSAMA



MATERIALS

- Canvas
- Paper towel
- Water dish
- Palette paper
- Paint brush
- Standard acrylic paint
- Heavy body acrylic paint

INSTRUCTIONS

Step 1: Coat

To create your artwork inspired by Yayoi Kusama's repetitive painting practice, you'll want to start off by first covering your entire canvas with a base coat of standard acrylic paint. This will be the color that is going to peek through your later painted top design. Use a brighter color for the base coat, to provide a high contrast for step two.

Tip: The further away from each other two colors are on the color wheel, the higher the contrast.

Step 2: Select

Use a heavy body acrylic paint for the next layer to achieve a textured quality. Generously cover the bristles of your brush, using enough paint to leave a thick brushstroke behind. For this project we are exploring the brushstroke seen in our featured artwork, painting an arc/half circle as the first mark on the canvas. But there isn't one specific technique Kusama used when painting her Infinity Nets. We encourage you to try different visual solutions when making your original artwork, broadening your creative response to repetitive, random gestures you notice in your environment, like the shape of a leaf or pattern on a pillow.

Step 3: Repeat

Continue making these gestural marks on your canvas, repeating them right next to the other. Pay close attention to how each tightly connects and flows into the other, leaving just a peek of the base color showing through. As you paint, gradually rotate your canvas to create an unpredictable placement and movement in your brush strokes. In the end, your pattern will show a design that appears accidental and hypnotic.

There you have it — your own Yayoi Kusama-inspired work of art! What will you title your painting?

Share what you made and tag @blantonmuseum with #ArtWhereYouAre and visit blantonmuseum.org/museumfromhome for more resources.

LEARN MORE

Read

- [Who Is Yayoi Kusama? | TATE Kids](#)
- [MoMA and Yayoi Kusama Team up on Extremely Limited-Edition Skate Decks | GARAGE](#)
- [6 Works That Explain Yayoi Kusama's Rise to Art World Stardom](#)

Watch

- [Yayoi Kusama: Obsessed with Polka Dots | TATE](#)
- [Why Yayoi Kusama Matters Now More Than Ever | ARTiculations](#)
- [In The Studio: A Closer Look at Yayoi Kusama. No. F, 1959 | MoMA](#)

Reflect

What element of your painting catches your eye first?

Is the illusion of space and depth achieved? How could the illusion of depth be amplified?

Besides the arc gesture, what other brushstroke could you use to create your own unique inspired Infinity Net pattern?