

BLANTON MUSEUM OF ART

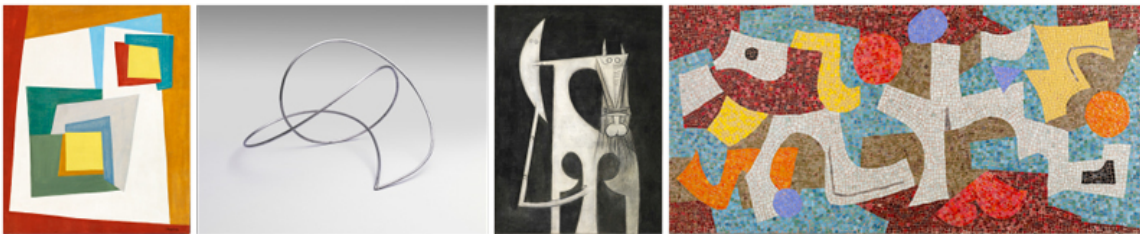
FOR IMMEDIATE RELEASE

MEDIA CONTACTS:

Kathleen Brady Stimpert, 512.475.6784, kathleen.bradystimpert@blantonmuseum.org

Stacey Ingram Kaleh, 512.471.8433, stacey.kaleh@blantonmuseum.org

BLANTON MUSEUM ANNOUNCES MAJOR GIFT OF MODERN AND CONTEMPORARY LATIN AMERICAN ART



Gift of Judy and Charles Tate Significantly Expands Blanton's Celebrated Latin American Collection; Exhibition of Collection Highlights Planned

AUSTIN, Texas — August 28, 2014—The Blanton Museum of Art at the University of Texas at Austin has been gifted approximately 120 modern and contemporary Latin American artworks from UT alumni Judy and Charles Tate of Houston. In addition, the Tates have made a major contribution towards the endowment that supports the museum's Latin American curatorship. Their collection—the entirety of which will ultimately come to the Blanton—includes painting, drawing, prints, sculpture, and mixed media works by artists Tarsila do Amaral, Lygia Clark, Frida Kahlo, Carlos Mérida, Wifredo Lam, Armando Reverón, Diego Rivera, Alejandro Xul Solar, and Joaquín Torres-García, among others. Spanning the early 20th century to the present, the gift features many of the artists who were key to the creation of modernism in Latin America. The endowment gift adds to the Tates' past contributions to the Blanton's Latin American art program and reaffirms their commitment to endowment building as an institutional priority. The total value of the gift to the Blanton is \$10 million, taking the museum over its fundraising goal in the university's Campaign for Texas.

“With this gift, Charles and Judy have once again made a hugely valuable contribution to the life of UT Austin,” remarked UT President Bill Powers. “This gift will continue to put us at the forefront as one of the country's best museums for Latin American art and will provide many new opportunities for students, faculty, and art historians. The Tates are role models for their leadership and commitment, and I thank them.”

Ardent supporters of UT for many years, the Tates have together and individually served and supported the Texas Exes, the Development Board, the Blanton Museum of Art, the Department of Biomedical Engineering, the University of Texas Investment Management

Company (UTIMCO), and the Commission of 125. Charles was elected to the McCombs School of Business Hall of Fame in 2003, and in 2007 he received a Distinguished Alumnus Award from the Texas Exes. He also received a UT Presidential Citation in 2011. Judy is the immediate past chair of the Blanton's Museum Council and is actively involved with a number of other UT organizations.

"Judy and Charles Tate have been visionary partners in ensuring that their alma mater remains intrinsic to the international conversation on modern and contemporary Latin American art," explained Blanton Director Simone Wicha. "A great museum is built on the foundation of a great collection and the strength of its endowment. As the Blanton continues to grow and play a larger role on campus, the community, and beyond, so too must the museum's holdings, and this extraordinary collection will enrich our students' and visitors' lives. The Tates' investment in the endowment also will ensure many new opportunities for research and scholarship for future generations. The combination of these gifts will enhance the Blanton's position as an institution of learning, and its impact on the field of Latin American art."

For over fifteen years, the Tates have built a collection that complements the museum's existing holdings of more than 2,100 Latin American objects. Highlights include: an ethereal painting by Armando Reverón from the 1920s; a 1946 graphite drawing by Frida Kahlo and a cubist period drawing by Diego Rivera; two paintings and an ink drawing by Wifredo Lam spanning his time in France in the late 1930s to his return to Cuba in the 1940s; a 1951 surrealist painting by Leonora Carrington; a 1953 glass mosaic by Carlos Mérida—a playful fusion of abstraction and figuration; mid-20th-century kinetic and concrete works by important artists Jesús Rafael Soto, Carlos Cruz-Diez, Lygia Clark, Willys de Castro, Lothar Charoux, Mira Schendel, and Hélio Oiticica; and contemporary works by Fernando Botero, Waltercio Caldas, Jorge Macchi, and Sebastián Gordín.

The Tate collection will introduce many new artists to the Blanton, as well as strengthen the museum's examples of modern and postwar artistic innovation from Latin America. It also builds upon the museum's rich legacy of exhibitions and scholarship in the field of Latin American art. The Blanton was the first museum in the United States to establish (in 1988) a curatorial position devoted solely to Latin American art. Exhibitions including *Re-Aligning Vision: Alternative Currents in South American Drawing* (1997), *The Geometry of Hope: Latin American Art from the Patricia Phelps de Cisneros Collection* (2007), *Recovering Beauty: The 1990s in Buenos Aires* (2011), and *The Nearest Air: A Survey of Works by Waltercio Caldas* (2013) presented new scholarship and introduced (in some instances, for the first time in the U.S.) these important artists to new audiences.

One of the first major Latin American traveling exhibitions produced by the museum was *El Taller Torres-García: The School of the South and its Legacy* (1992). The Tates have collected extensively from this group of artists, including a painting and two drawings by Joaquín Torres-García in his characteristic universal constructivist style as well as works by many of the School of the South students, including Francisco Matto, Julio Alpuy, and José Gurvich. The works by these artists will bolster the Blanton's holdings from this period.

EXHIBITION

From September 20, 2014 – February 15, 2015, the Blanton will present a selection of approximately 70 works from the collection. Entitled *La línea continua*, the exhibition takes its name from an elegant sculpture from the collection by Enio lomme: a stainless steel “line” that traces an infinite loop in space. The work is also a fitting metaphor for the continual and nourishing connection between Judy and Charles Tate, the University of Texas, and the Blanton Museum of Art.

A fully-illustrated catalogue of the Tate gift will be published in fall 2014, with a preface by UT President Bill Powers; Blanton Director Simone Wicha in conversation with Judy and Charles Tate; an essay by Blanton Curator of Latin American Art Beverly Adams, and short pieces by UT Art and Art History graduate students.

This exhibition is organized by the Blanton Museum of Art.

###

The Blanton’s Latin American Collection

The Blanton holds one of the oldest, largest, and most comprehensive collections of Latin American art in the country, featuring works by many artists underrepresented elsewhere in U.S. collections. Among those represented at the Blanton are Fernando Botero, Joaquín Torres-García, Carlos Cruz-Diez, Gego, Luis Camnitzer, and Cildo Meireles.

The collection was greatly enriched in 1971 with the donation of 54 paintings from the collection of John and Barbara Duncan. This gift was later expanded to include an additional 41 paintings and 227 works on paper. The Blanton's early leadership in the field of Latin American art and scholarship owes much to the Duncans' visionary gift.

The Latin American collection of modern and contemporary art now comprises more than 2,200 modern and contemporary paintings, prints, drawings, and sculptures, reflecting the great diversity of Latin American art and culture. More than 600 artists from Mexico, South and Central America, and the Caribbean are represented.

About the Blanton Museum of Art

Founded in 1963, the Blanton Museum of Art is one of the foremost university art museums in the country and holds the largest public collection in Central Texas. Recognized for its modern and contemporary American and Latin American art, Italian Renaissance and baroque paintings, and encyclopedic collection of prints and drawings, the Blanton offers thought-provoking, visually arresting, and personally moving encounters with art.

The museum is located at the intersection of Martin Luther King Jr. Boulevard and Congress Avenue and is open Tuesday through Friday from 10 - 5, Saturday from 11-5, and Sunday from 1-5. Thursdays are free admission days and every third Thursday the museum is open until 9. Admission Prices: Adults \$9, Kids 12 and under FREE, Seniors (65+) \$7, Youth/College Students (13-21) \$5. Admission is free to members, all current UT ID-holders. For additional information call (512) 471-7324 or visit www.blantonmuseum.org

Image captions:

Lothar Charoux

Composicao I, 1950

Oil on canvas, 23 13/16 x 19 1/16 in.

Gift of Judy S. and Charles W. Tate

Enio Iommi

Línea continua, c. 1949-52

Stainless steel, 9 5/8 x 11 3/4 x 11 3/4 in.

Gift of Judy S. and Charles W. Tate

Wifredo Lam

Untitled, 1948

Oil on canvas, 28 3/4 x 21 3/16 in.

Gift of Judy S. and Charles W. Tate

© 2014 Artists Rights Society (ARS), New York / ADAGP, Paris

Carlos Mérida

Abstract, 1953

Glass mosaic on composition matrix

33 1/8 x 72 x 1 1/8 in.

Gift of Judy S. and Charles W. Tate

© 2014 Artists Rights Society (ARS), New York / SOMAAP, Mexico City